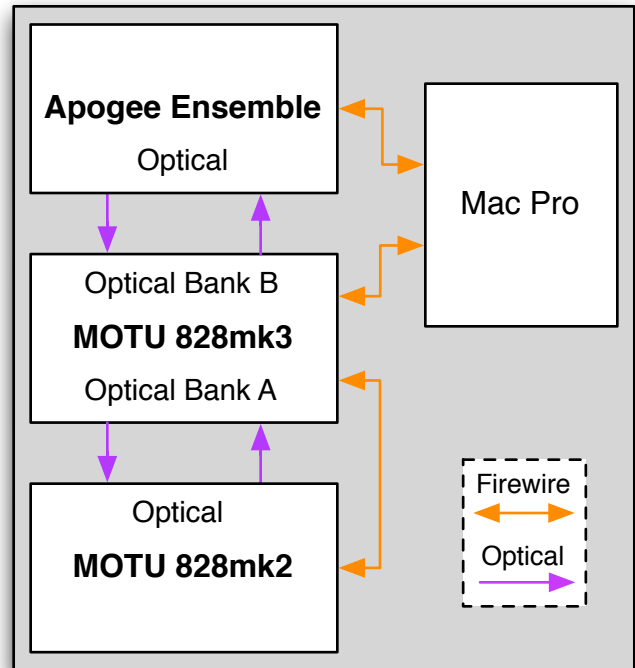


A59: Three (3) audio interfaces, Volta, and You by Dave Linnenbank with Sam Burke

The analog station in A59 has 3 audio interfaces. The **Apogee Ensemble** is present because of its high quality converters and clock. The **MOTU 828mk3** and **828mk2** both have the proper type of analog outputs to permit generation of control voltage (CV) signals from software such as Volta.

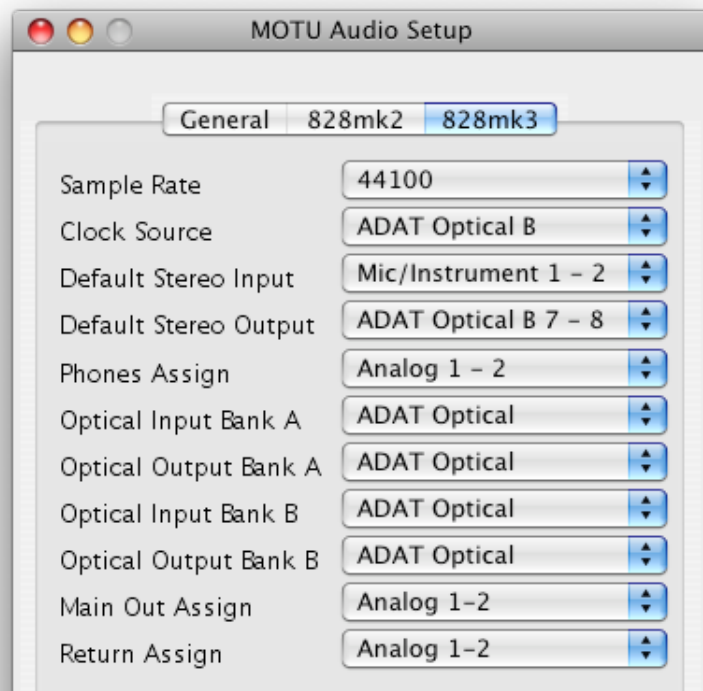
For using Volta, the 828mk3 is intended to be the primary audio interface. It has two sets of ADAT I/O (“Bank A” and “Bank B”) and is interconnected with the other interfaces: Bank A is looped to the 828mk2, and Bank B is looped to the Ensemble (see diagram).

After running `MT Software Restore.app` in `Applications/Utilities`, follow these steps to restore the audio interfaces...

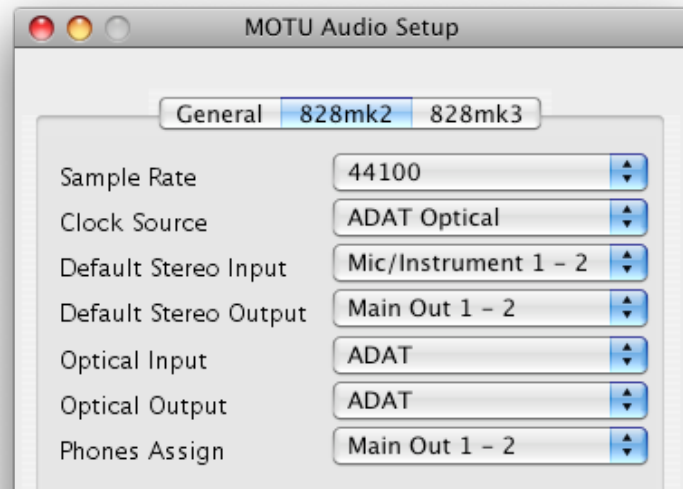


1) Launch `MOTU Audio Setup.app`. There should be separate tabs labeled `828mk2` and `828mk3`; if not, power cycle that unit(s).

a) For the **828mk3**, set Optical Input Bank A, Optical Output Bank A, Optical Input Bank B and Optical Output Bank B all to ADAT Optical. Set the Clock Source to ADAT Optical B. Set the Default Stereo Output to ADAT Optical B 7 - 8.



b) For the 828mk2, set both the Optical Input and Optical Output to ADAT. Set the Clock Source to ADAT Optical.



2) Launch CueMix FX.app. Under the Window menu, select the item that begins with MOTU 828mk3, and under the Configurations menu, select A59 - 828mk3 Default. Then under the Window menu, select the item that begins with MOTU 828mk2, and under the Configurations menu, select A59 - 828mk2 Default.

3) Launch Maestro.app. In the File menu under Open Recent, select A59 Ensemble Default.mst. (When you quit Maestro.app, please choose Don't Save.)

4) If any lights on the front of the 828mk3 are flashing, open Audio MIDI Setup.app. Go to the Audio Devices tab, and on the Properties For: option, select Ensemble (2406). Then under the Audio Input area, set the Format: setting to 44100.00 Hz.



After the station is restored, the Ensemble is the selected audio interface. To work with Volta, set your sequencer's audio driver to the MOTU 828mk3.

The audio interface settings applied above set up the station so that audio going to the Ensemble analog inputs are converted and forwarded (or 'normalled') to the 828mk3 ADAT inputs. At the same time, certain 828mk3 ADAT outputs are forwarded to analog outputs on the 828mk2 or Ensemble. This was done because your DAW is only talking to the 828mk3, and this setup gives you eight more CV outputs (via the 828mk2) and lets you use a higher quality clock and converters for audio (from the Ensemble).

The following charts describe which interface ports are forwarded to others.

Signal routed to these inputs...	Is normalled to these inputs...
Ensemble: Analog 1 - 2	828mk3: ADAT Optical B 1 - 2
Ensemble: Analog 3 - 4	828mk3: ADAT Optical B 3 - 4
Ensemble: Analog 5 - 6	828mk3: ADAT Optical B 5 - 6
Ensemble: Analog 7 - 8	828mk3: ADAT Optical B 7 - 8

Signal routed to these outputs...	Is normalled to these outputs...
828mk3: ADAT Optical A 1 - 2	828mk2: Analog 1 - 2
828mk3: ADAT Optical A 3 - 4	828mk2: Analog 3 - 4
828mk3: ADAT Optical A 5 - 6	828mk2: Analog 5 - 6
828mk3: ADAT Optical A 7 - 8	828mk2: Analog 7 - 8
828mk3: ADAT Optical B 7 - 8	Ensemble: Analog 7 - 8